



Legend










CHSR Station in Tunnel

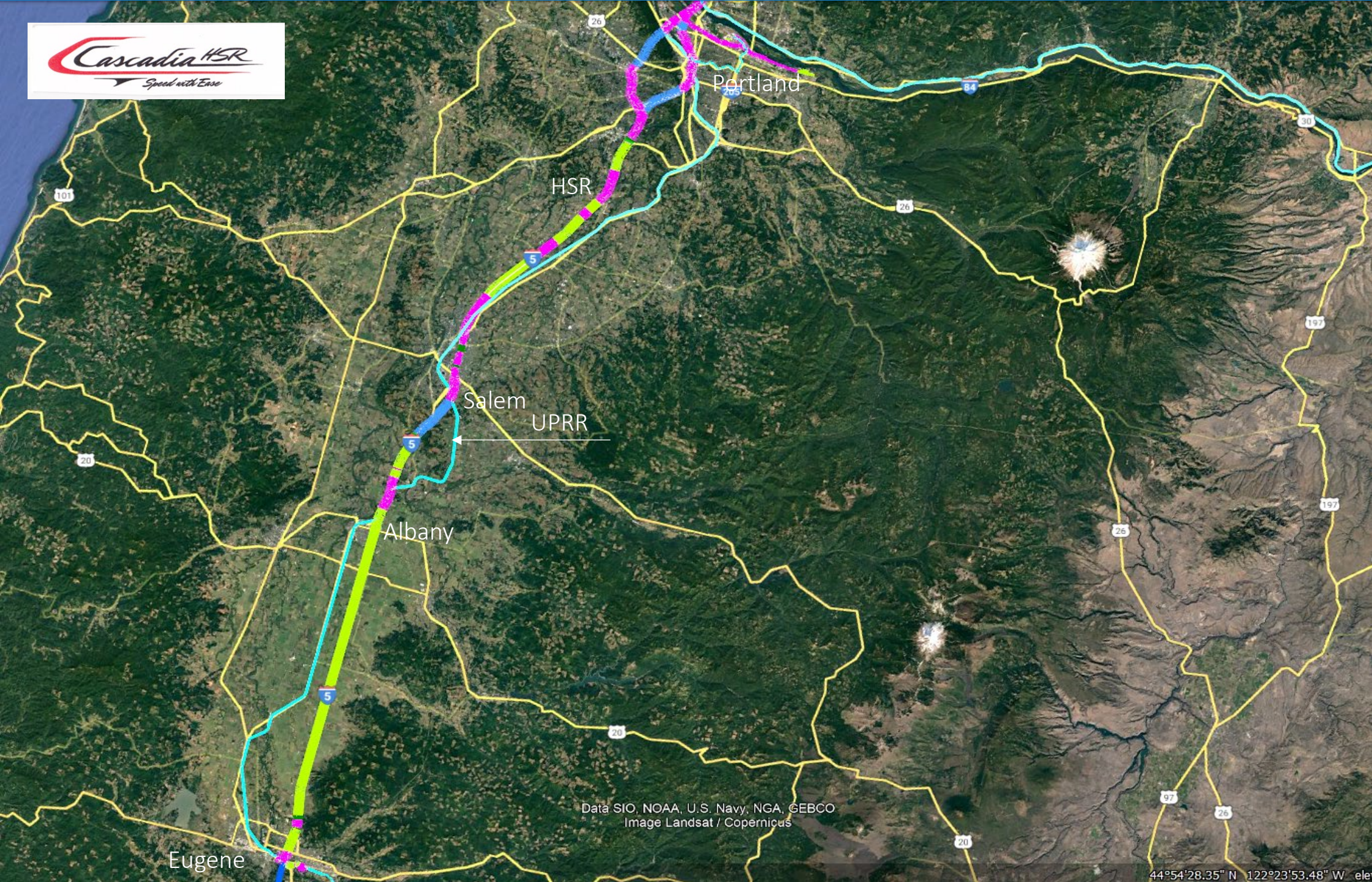


CHSR Station on Flyovers



CHSR Station on Ground

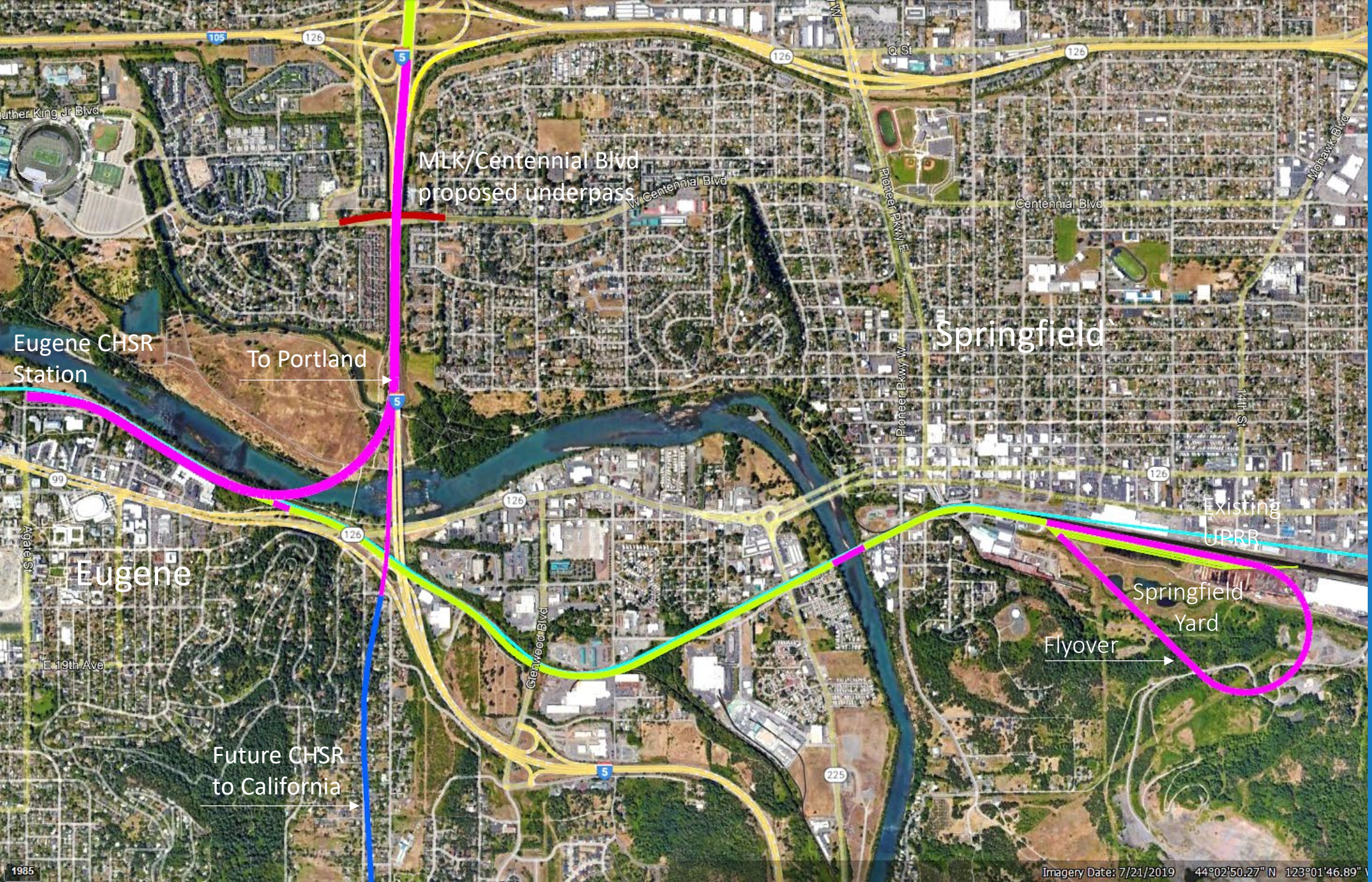
-  On ground
 -  Cuts
 -  Fills
 -  Flyovers
 -  Tunnels
 -  Existing Freight Railroads, other than BNSF and UP RR
 -  Existing Freight Railroads
- C-ICE: Cascadia Inter-City Express
CCE: Cascadia Commuter Express



Existing Union Pacific RR/Amtrak and Proposed CHSR Corridor

Amtrak uses UPRR freight tracks that are unsuitable for high-speed rail. The UPRR/Amtrak corridor is 123 miles long; the CHSR is 13 miles shorter, reducing CO2 emissions, energy use, and maintenance costs.

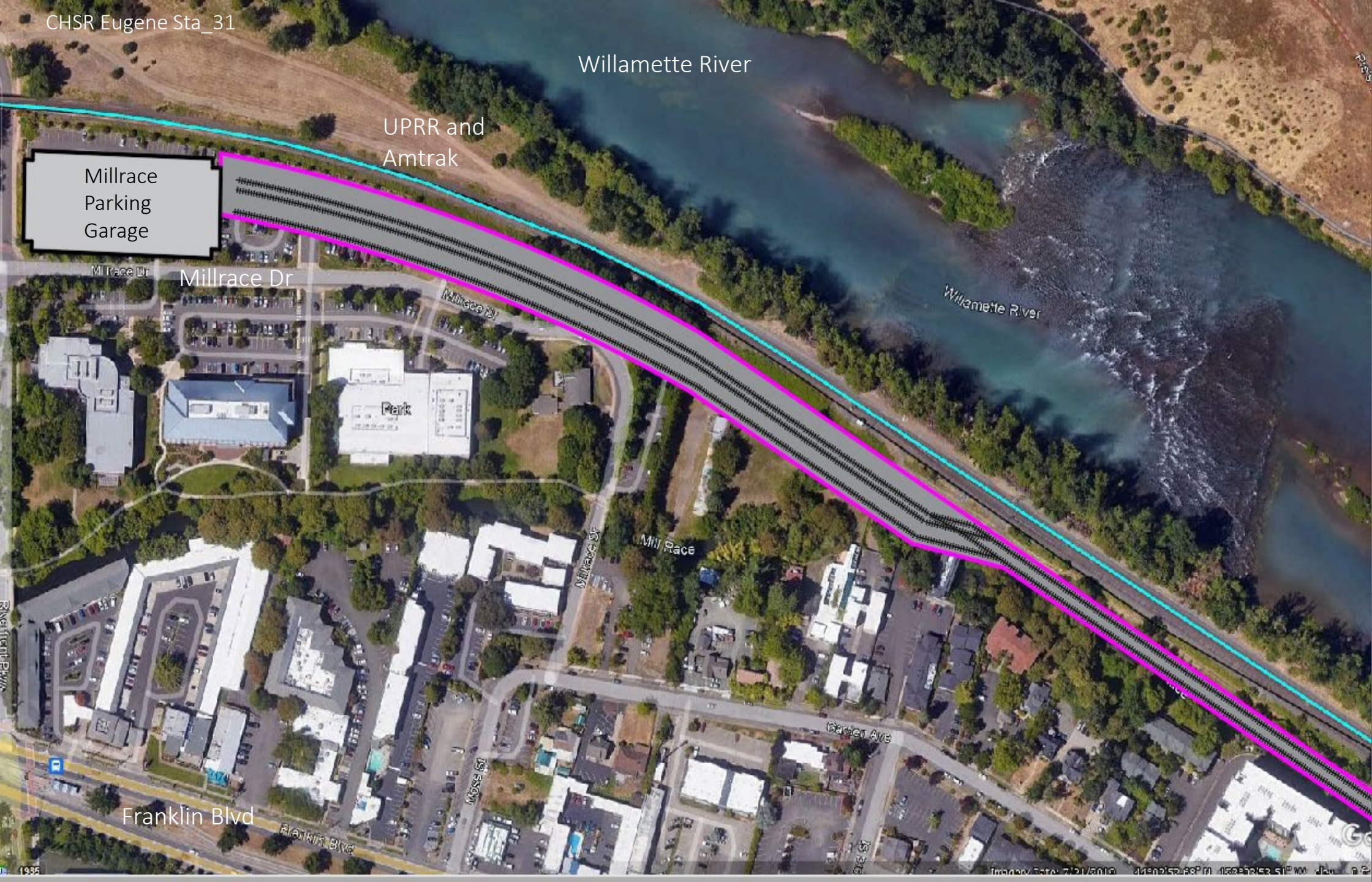
All CHSR corridors are double-tracked and electrified with the catenary above.



CHSR in Eugene and Springfield

The proposed Springfield yard will service, clean, and store trains.

The turnaround flyover is optional; it can be on the ground with some bridges, but a turnaround is needed.



Willamette River

UPRR and Amtrak

Millrace Parking Garage

Millrace Dr

Millrace Dr

Millrace Dr

Millrace Dr

Mill Race

Garden Ave

Franklin Blvd

Franklin Blvd

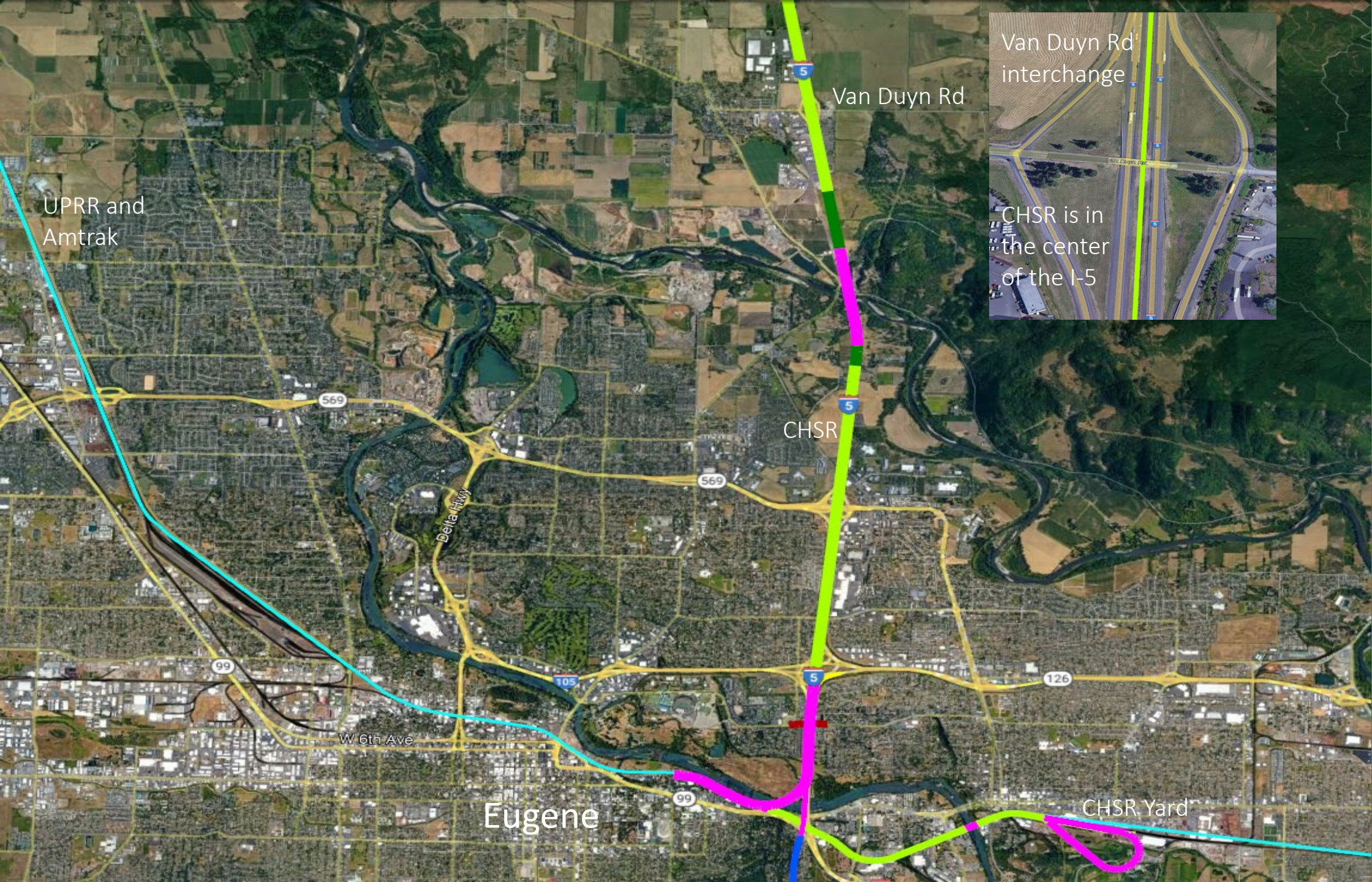
Moss St

Cascadia Inter-City Express (C-ICE) Station in Eugene

The three CHSR tracks are elevated above the existing parking lot.

The Eugene station will become the terminus for the Amtrak Starlight, which will be serviced at the Springfield Yard, then return to California on the same day.

The C-ICE station connects to Millrace Parking Garage ±35 ft above ground.



UPRR and Amtrak

Van Duyn Rd

Van Duyn Rd interchange

CHSR is in the center of the I-5

CHSR

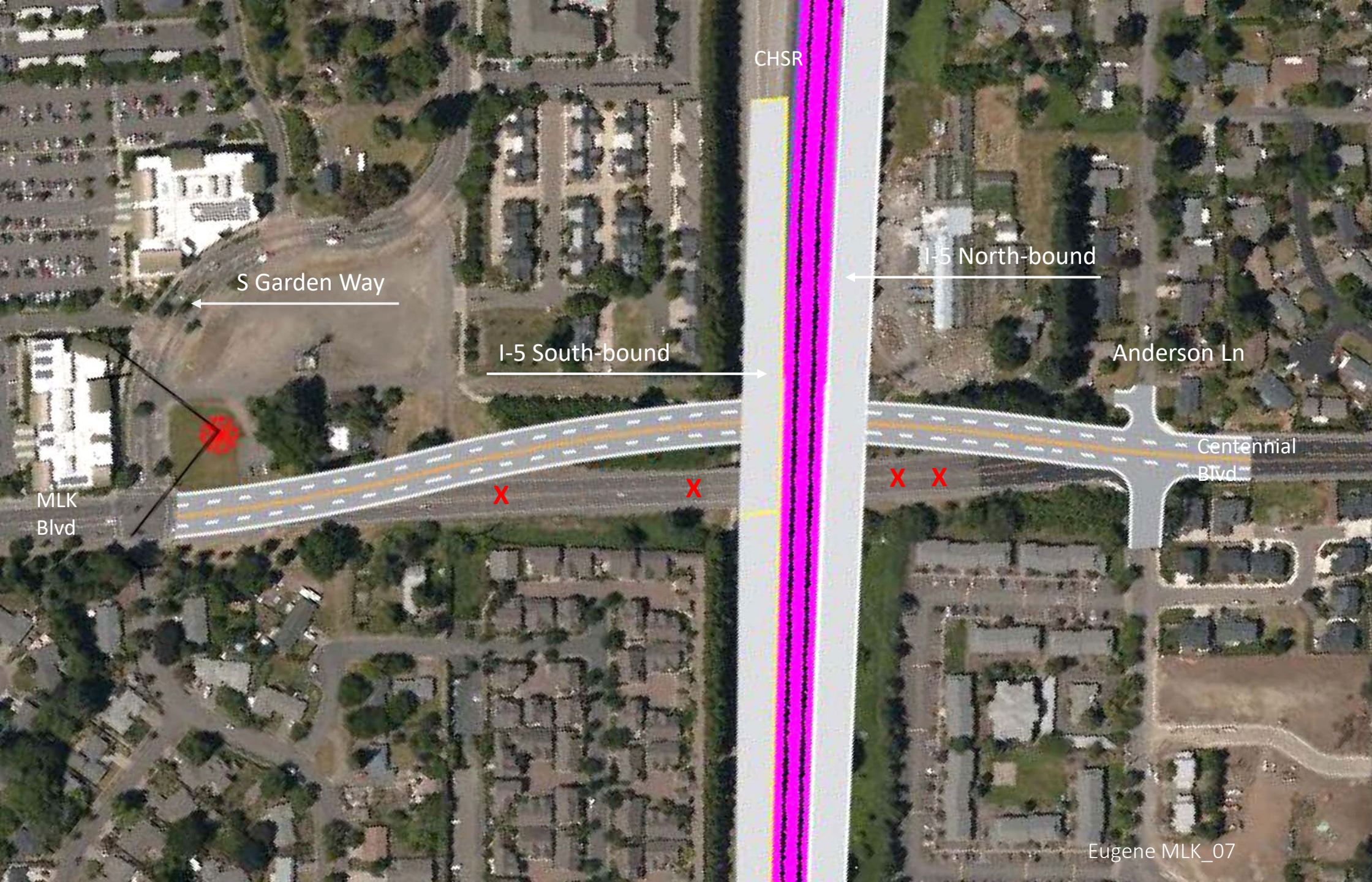
CHSR Yard

Eugene

CHSR Corridor between Eugene and Van Duyn Rd

The CHSR is in the center of the I-5; see insert.

The CHSR full-service and train storage yard is in Eugene.



CHSR

S Garden Way

I-5 South-bound

I-5 North-bound

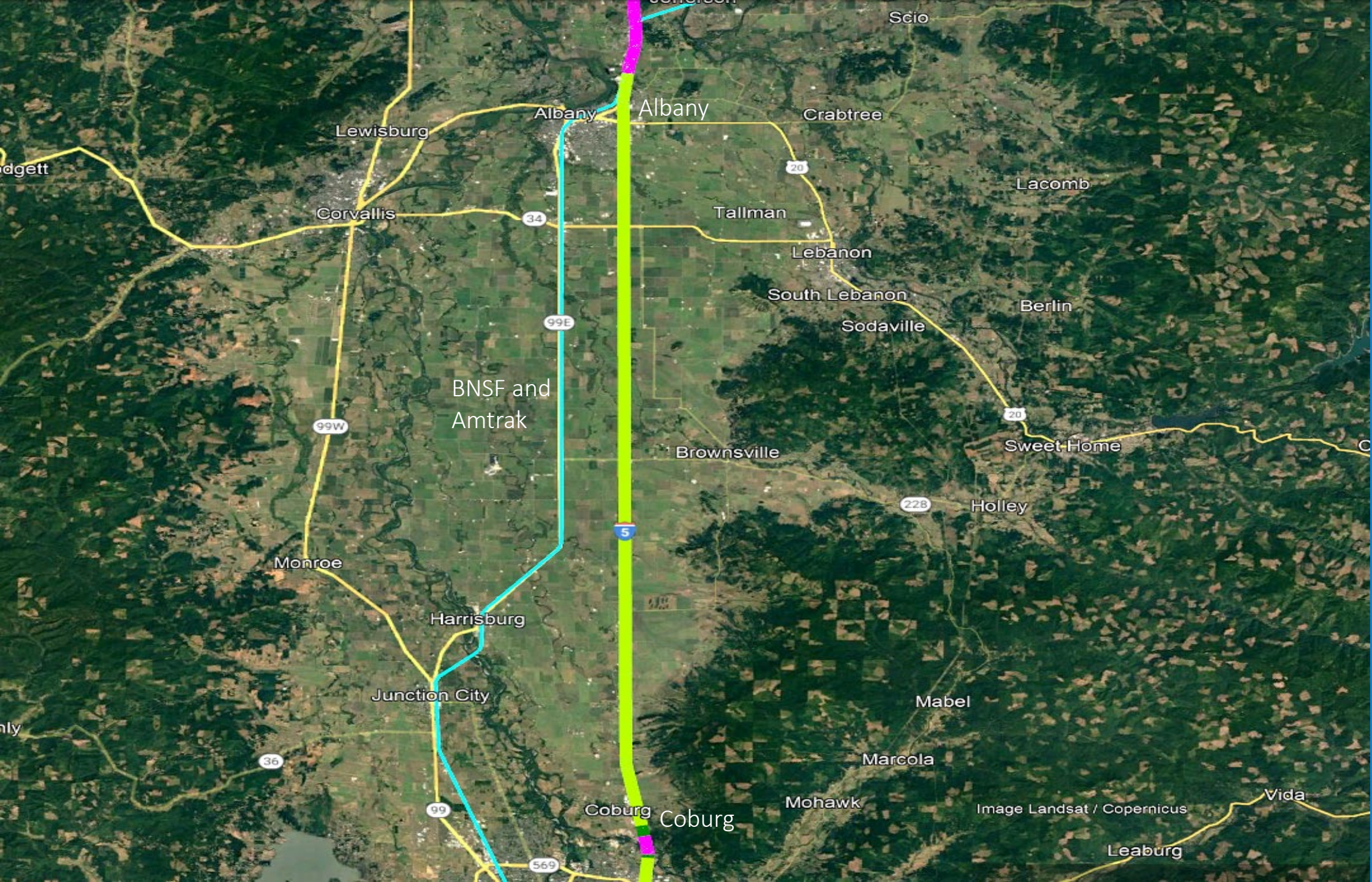
Anderson Ln

Centennial Blvd

MLK Blvd

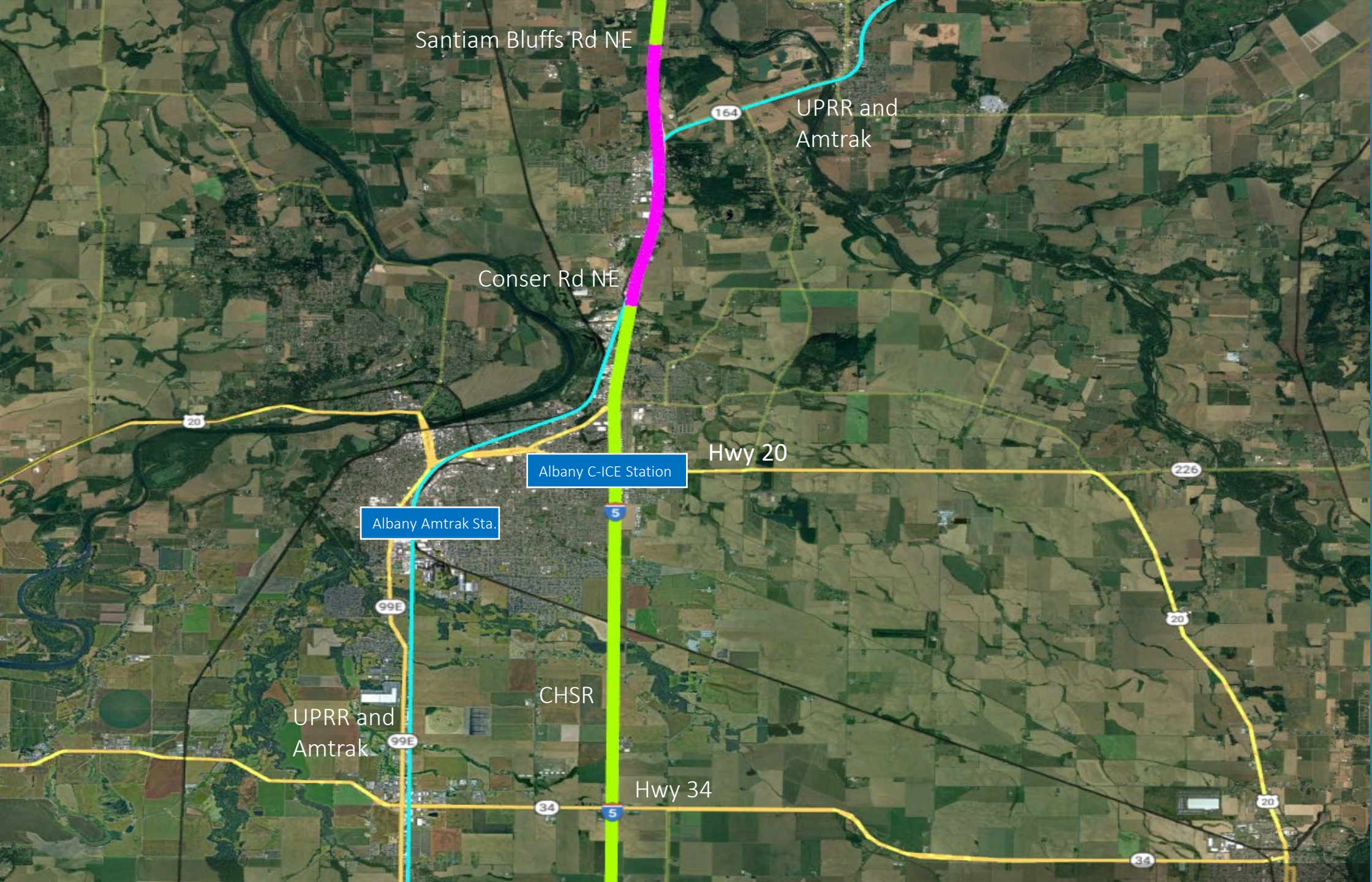
Eugene CHSR at I-5 and MLK/ Centennial Blvd

The existing Centennial Blvd overpass will be removed.



CHSR Corridor
between
Coburg and
Albany

The CHSR is in
the center of I-5.



Santiam Bluffs Rd NE

UPRR and Amtrak

Conser Rd NE

Hwy 20

Albany C-ICE Station

Albany Amtrak Sta.

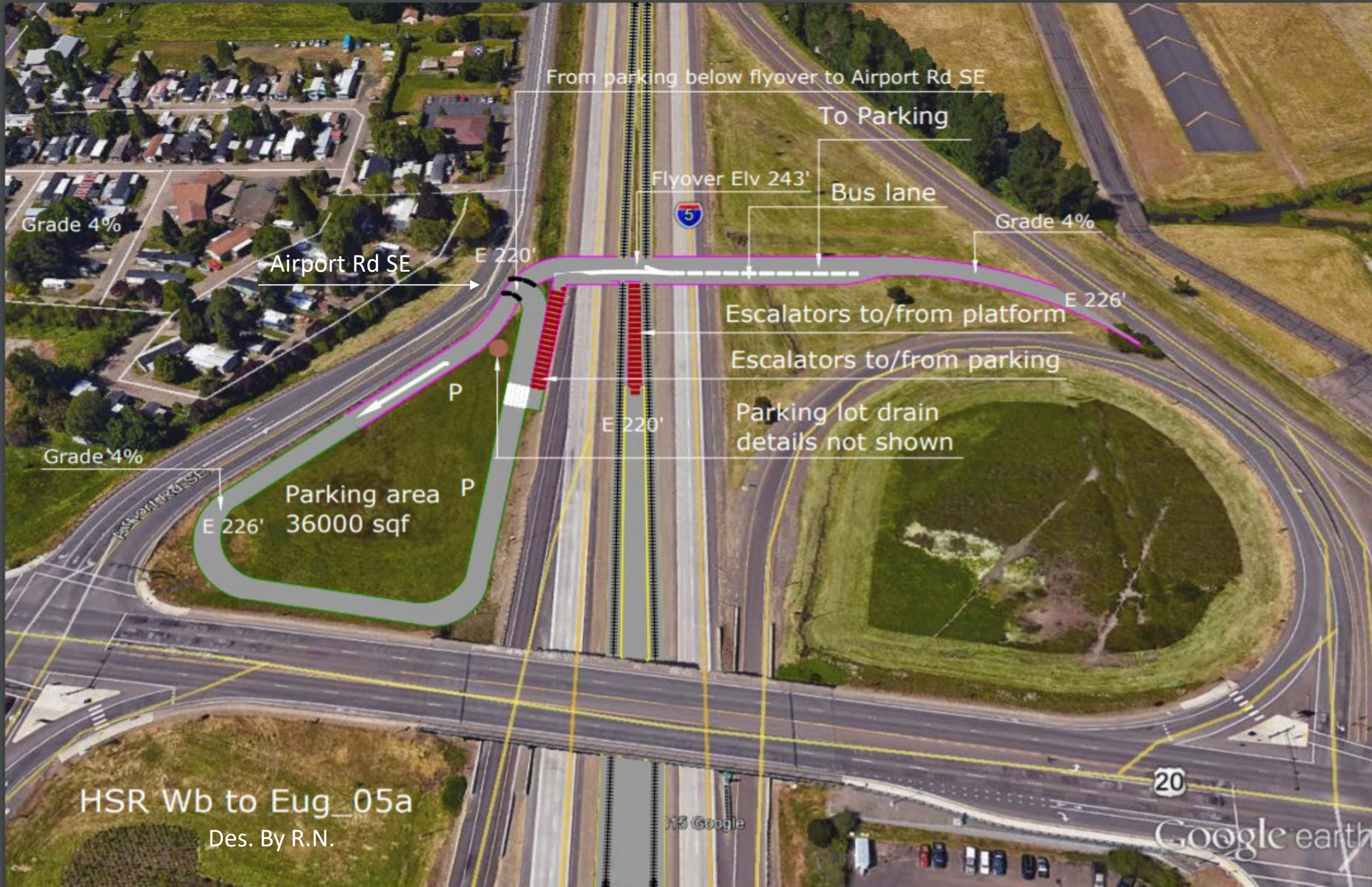
CHSR

UPRR and Amtrak

Hwy 34

CHSR Corridor between Hwy 34 and Santiam Bluffs Rd NE

The CHSR will stay in the center of I-5 until Conser Rd NE, then swerve west to avoid the tight I-5 curves. The CHSR will re-enter the I-5 median again at 0.4 miles south of Santiam Bluff Rd NE.



From parking below flyover to Airport Rd SE

To Parking

Flyover Elv 243'

Bus lane

Grade 4%

Grade 4%

Airport Rd SE

E 220'

E 226'

Escalators to/from platform

Escalators to/from parking

Parking lot drain details not shown

Grade 4%

P

Parking area P
36000 sqf

E 226'

HSR Wb to Eug_05a

Des. By R.N.

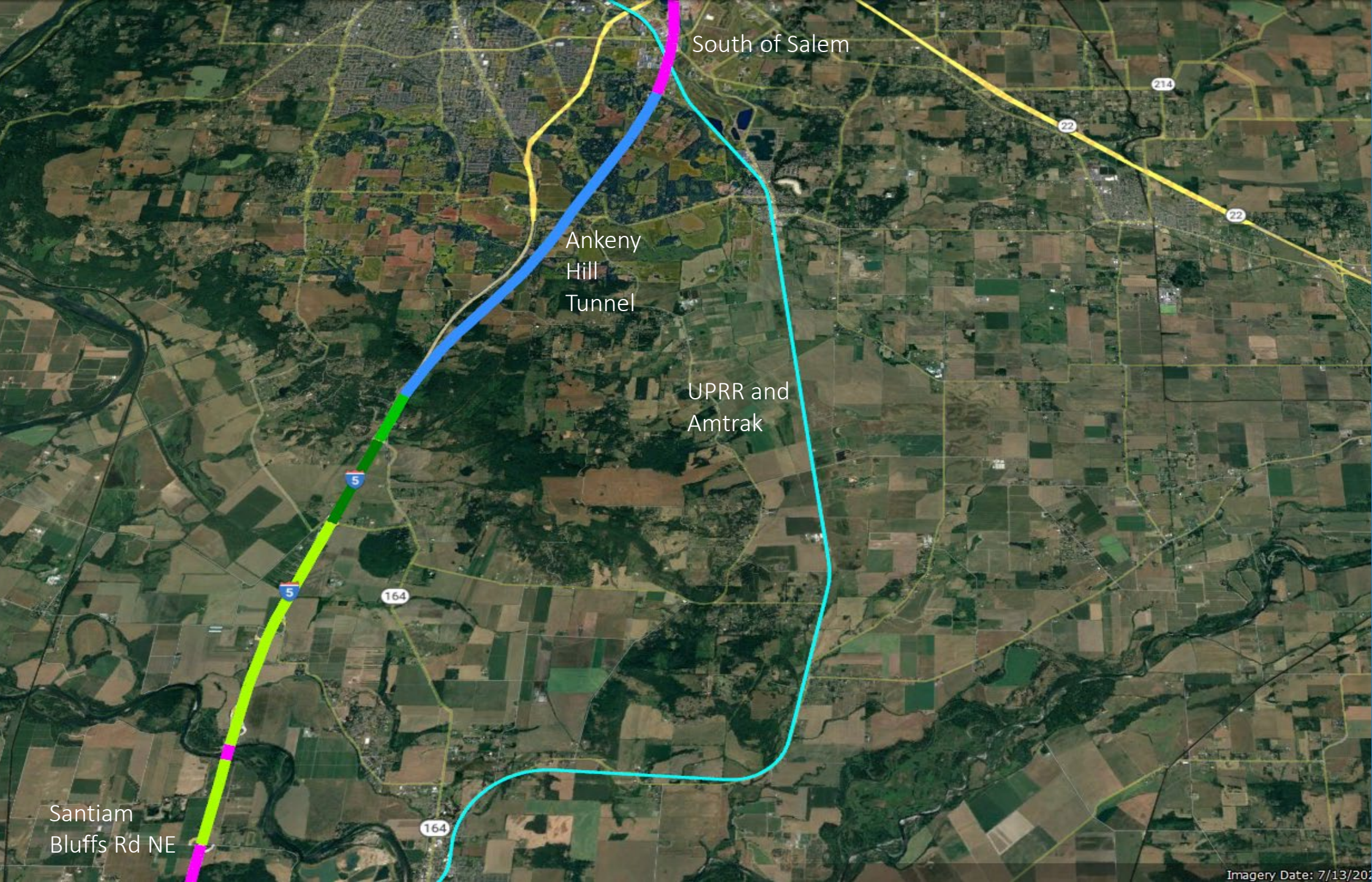
HS Google

20

Google earth

CHSR Corridor
and Albany
C-ICE Station

This station will
have express bus
service to
Newport and
Bend.



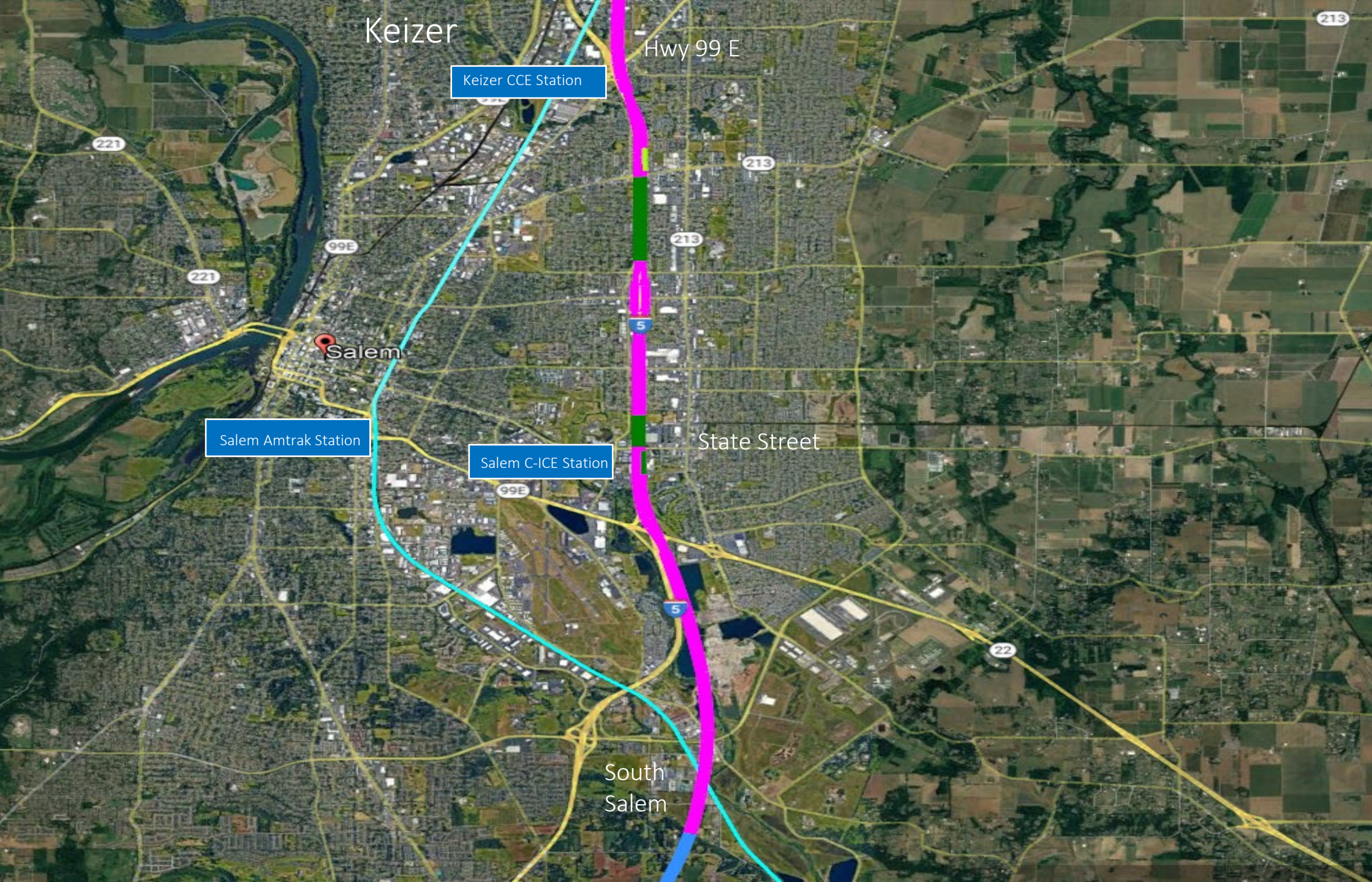
South of Salem

Ankeny Hill Tunnel

UPRR and Amtrak

Santiam Bluffs Rd NE

CHSR Corridor between Santiam Bluff Rd NE and South Salem



Keizer

Hwy 99 E

Keizer CCE Station

Salem

Salem Amtrak Station

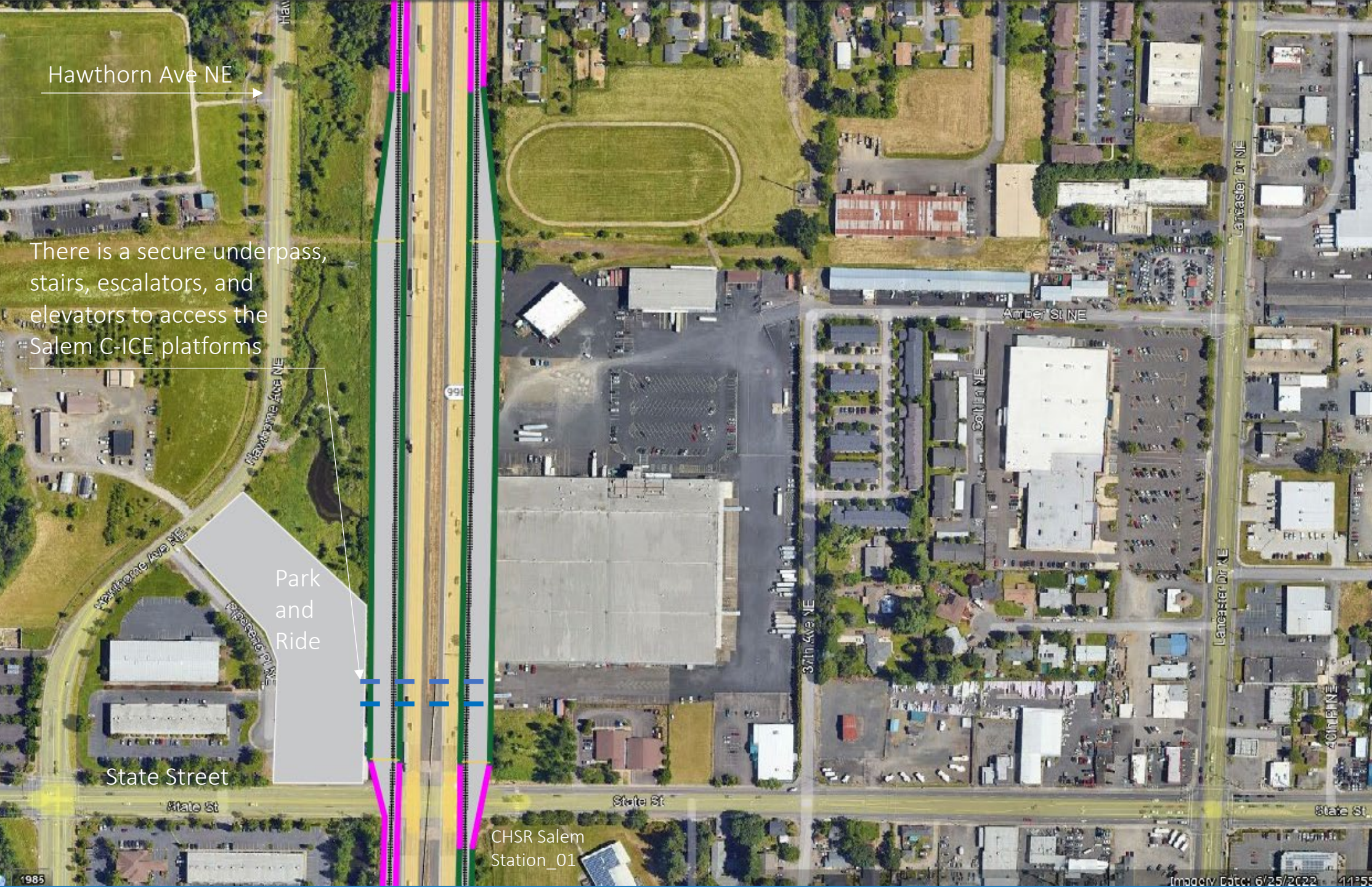
Salem C-ICE Station

State Street

South Salem

CHSR Corridor between South Salem and Keizer

The CHSR will have a station at State Street and Keizer at Hwy 99 East.



Hawthorn Ave NE

There is a secure underpass, stairs, escalators, and elevators to access the Salem C-ICE platforms

Park and Ride

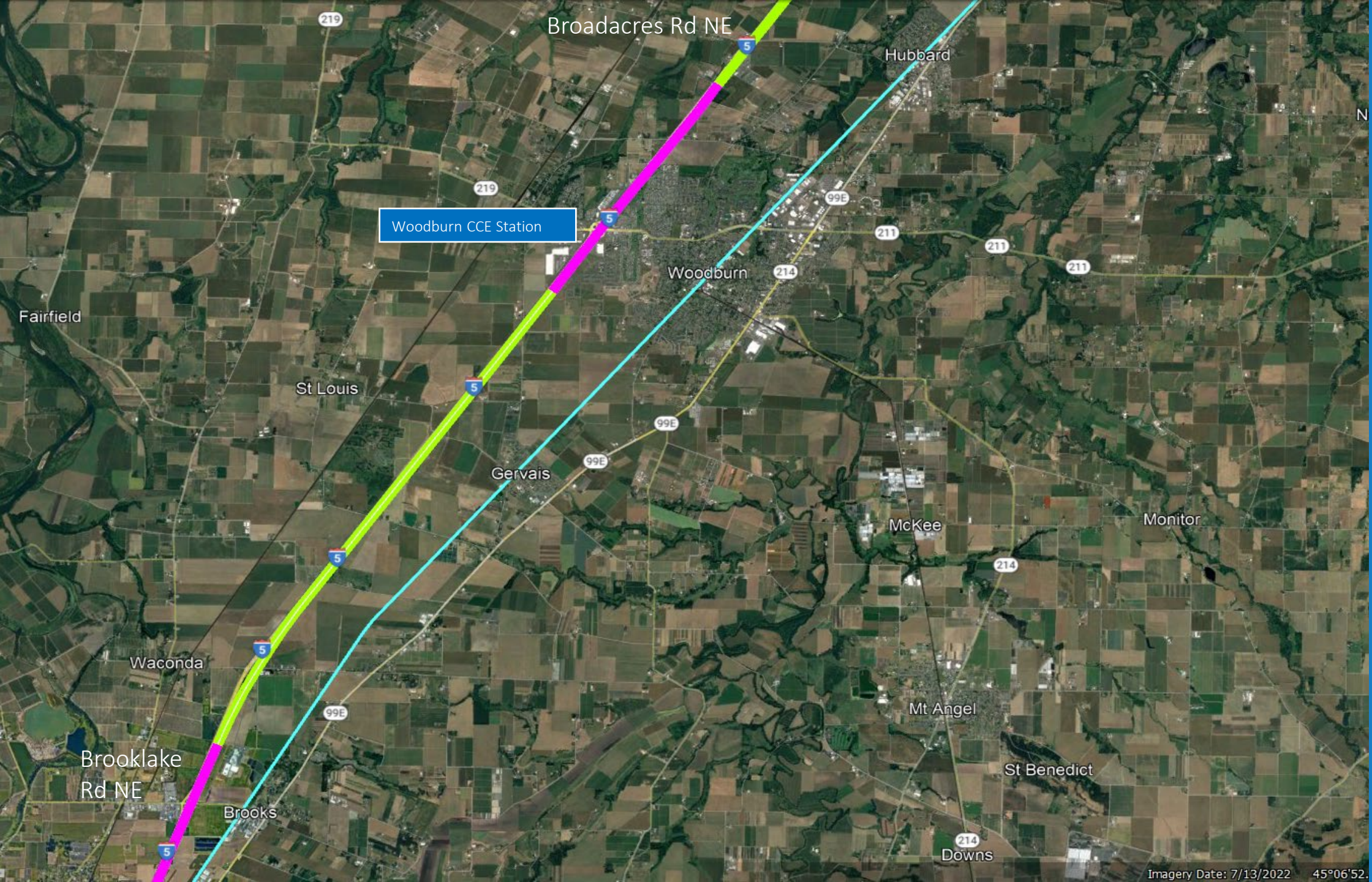
State Street

CHSR Salem Station_01

CHSR Corridor and Salem C-ICE Station at State Street and I-5

The Salem station has a single track on each side of the I-5. The platform width is 20 ft, and the length is 1300 ft.

There is a secure underpass for train passengers to use stairs, escalators, and elevators to access the platforms.



CHSR Corridor
between
Brooklake
Rd NE and
Broadacres
Rd NE

The Woodburn
CCE Station is at
I-5 and Hwy 214.



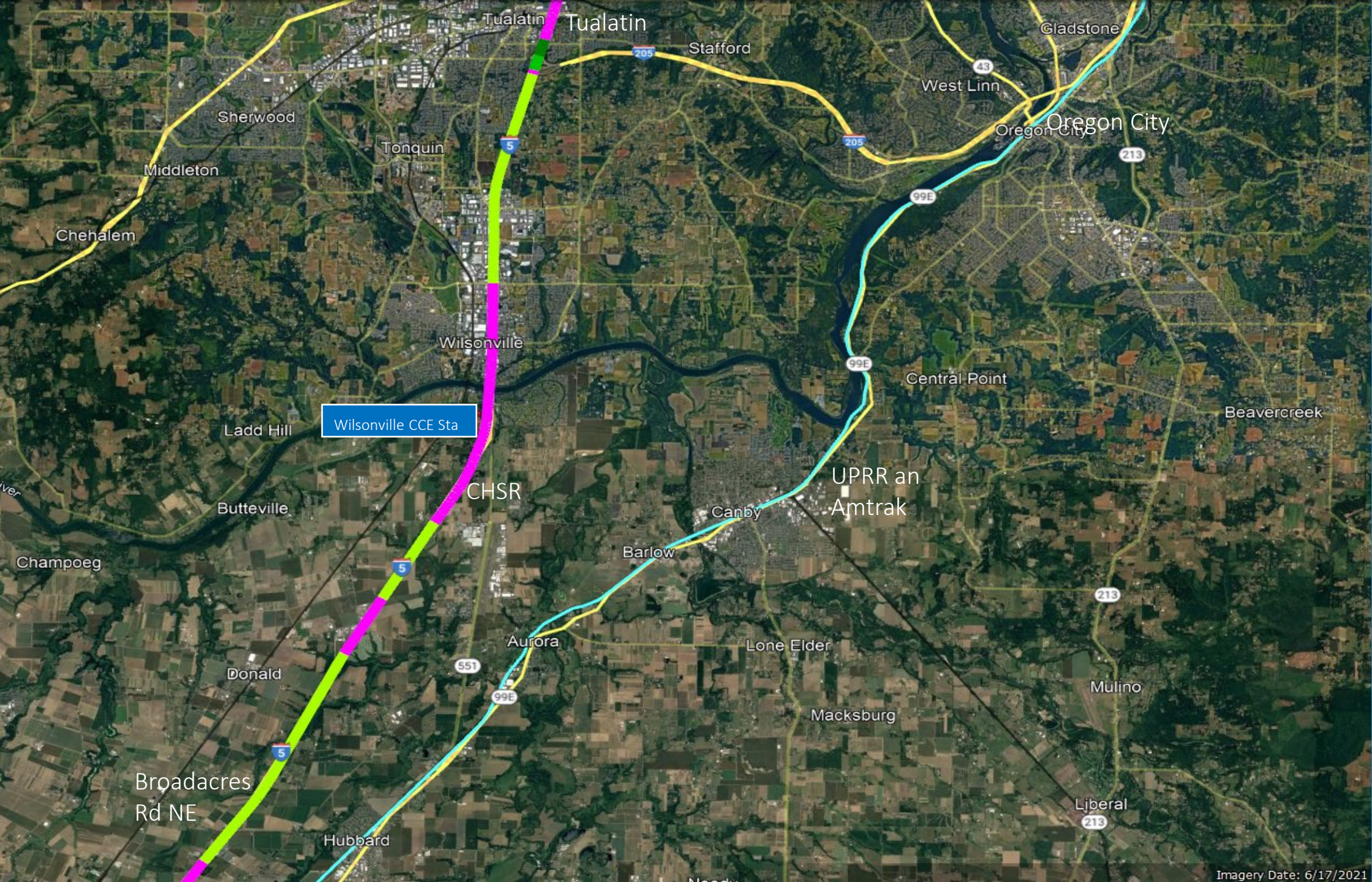
Woodburn
Outlet
Stores

Parking
2 acres

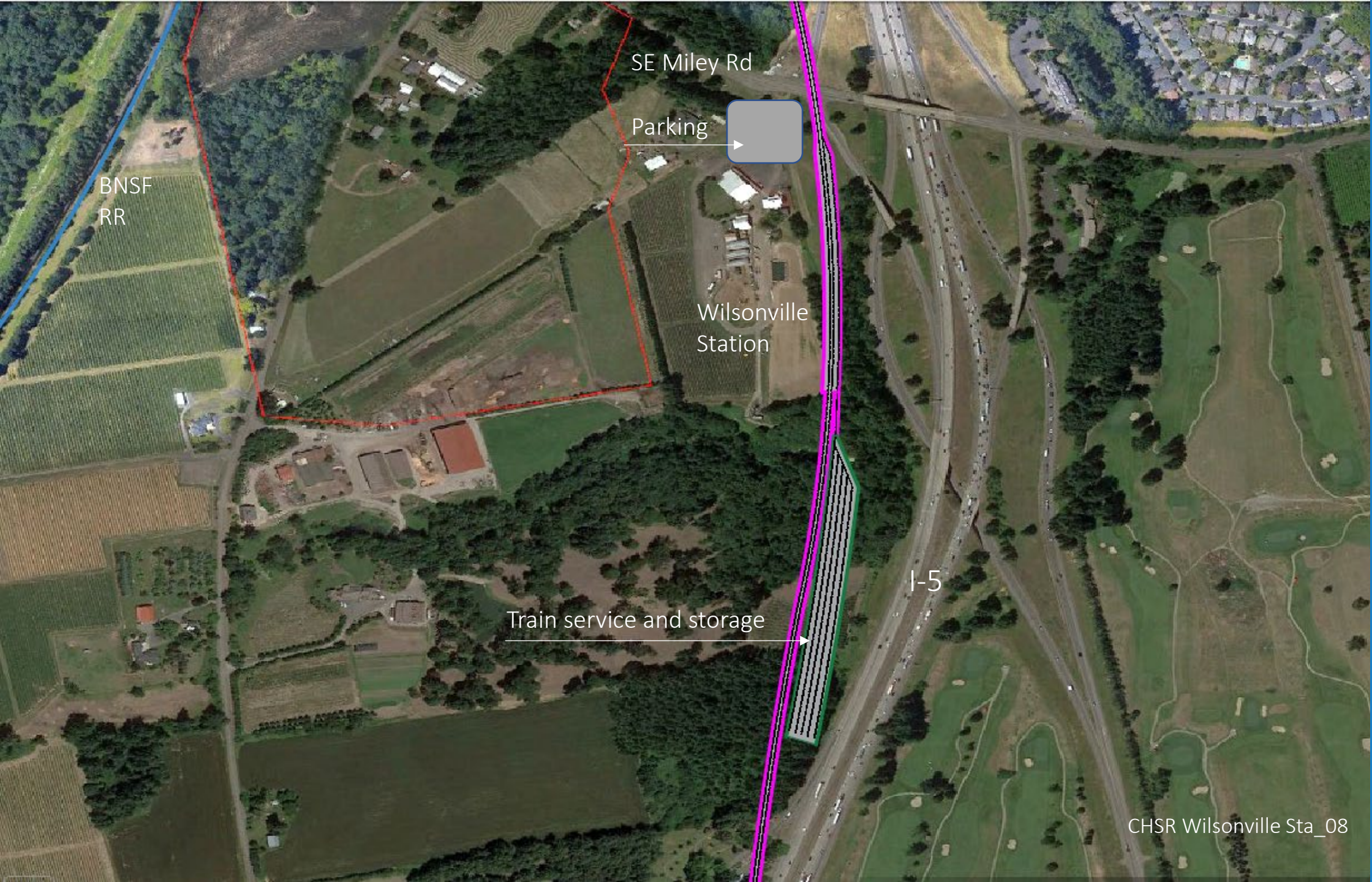
Hillsboro and Silverton Hwy NE

Woodburn
CCE Station

The CHSR has
four tracks to
bypass the CCE
trains.



CHSR Corridor between Broadacres Rd NE and I-205

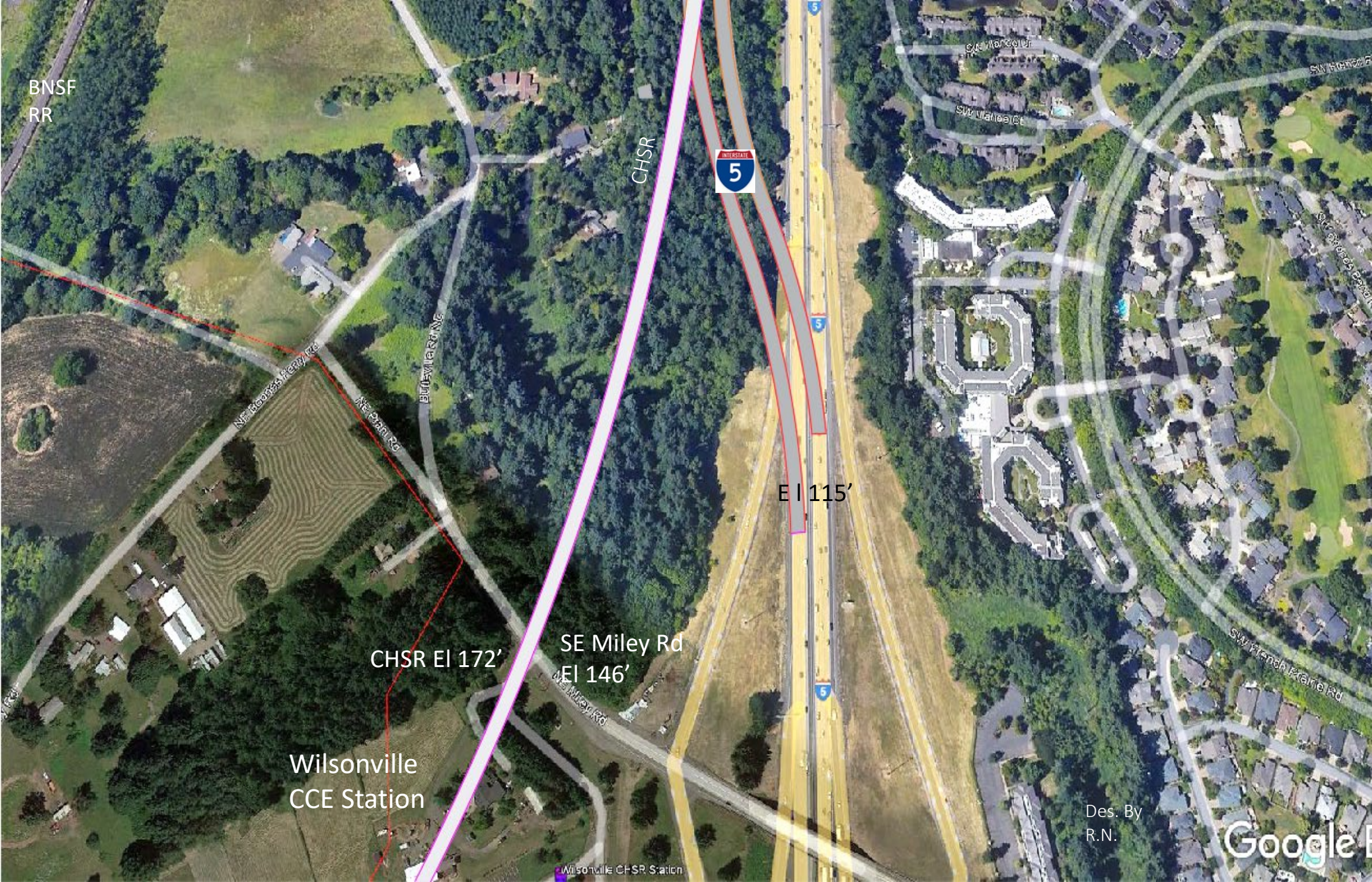


CHSR Corridor at the Proposed Wilsonville CCE Station

This station has three tracks, two for through trains and one for commuters.

There is also a train service and a storage yard.

The station is 1300 ft long. The service and storage yard tracks are 1300 feet long and can accommodate five double train sets.



BNSF
RR

CHSR



5

E I 115'

CHSR EI 172'

SE Miley Rd
EI 146'

Wilsonville
CCE Station

Wilsonville CHSR Station

Des. By
R.N.

Google

CHSR, CCE
between SE
Miley Rd and
the Southbank
of the
Willamette
River

The new I-5 is
below the CHSR
corridor.

Insert

E 115 ft

BNSF
Bridge

I-5 EI ± 135'

CHSR EI ± 185'

Willamette River

Willamette
River

Charbonneau
Community

Insert

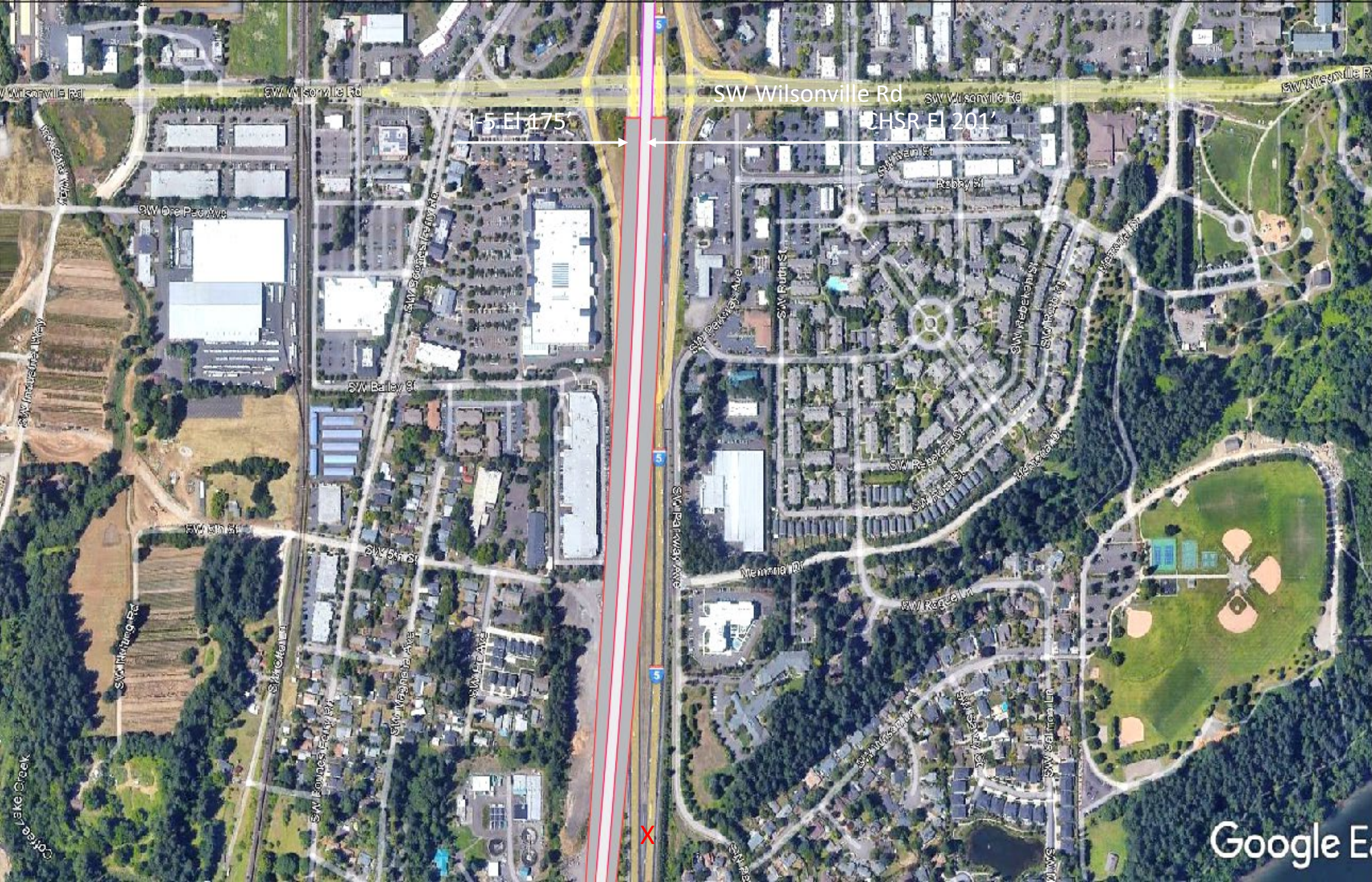
Wilsonville
CCE Station

Google

Google E

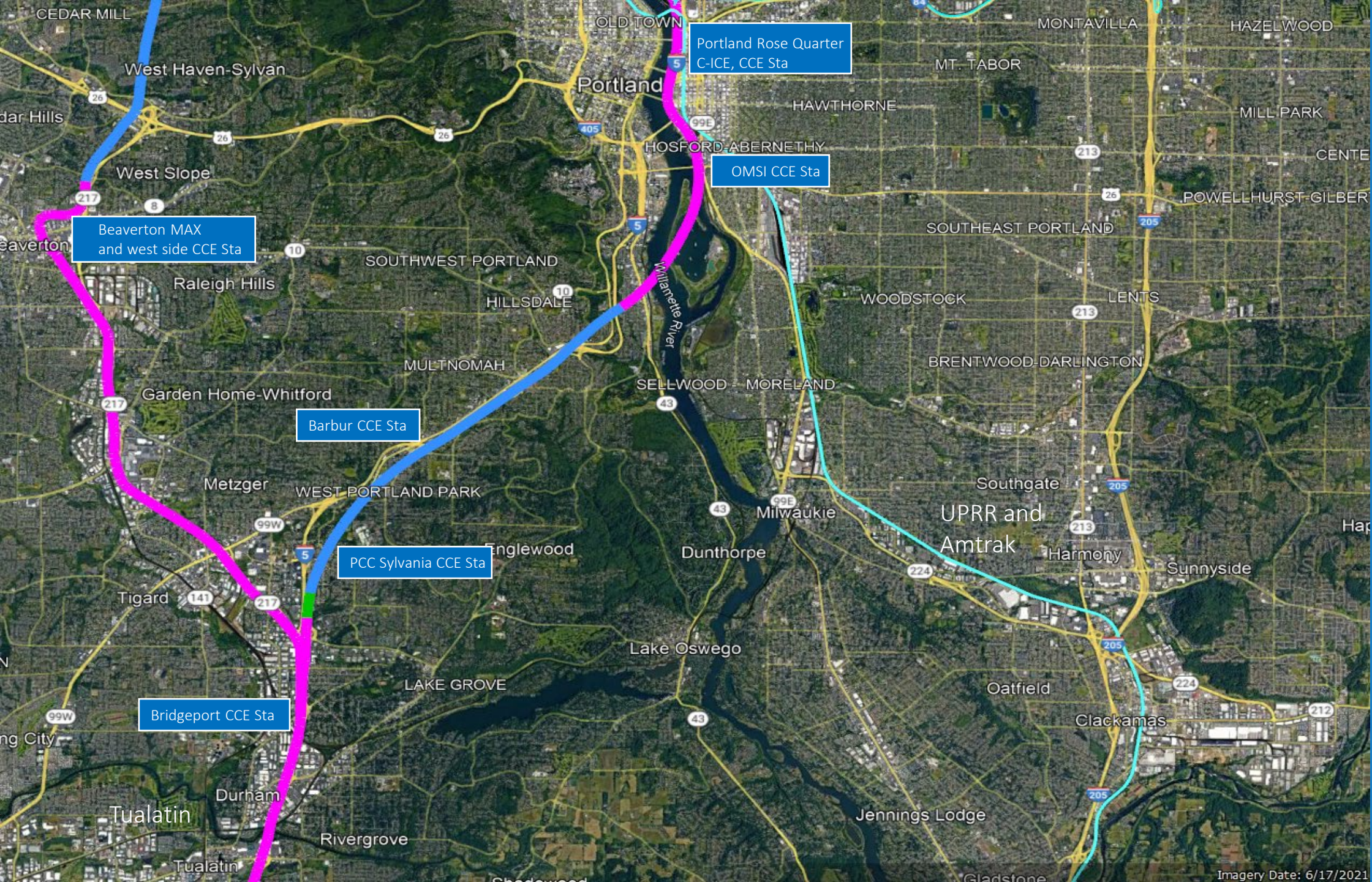
CHSR and the
New I-5
Willamette
River Crossing

The CHSR corridor
is 50 ft above the
I-5 corridor.

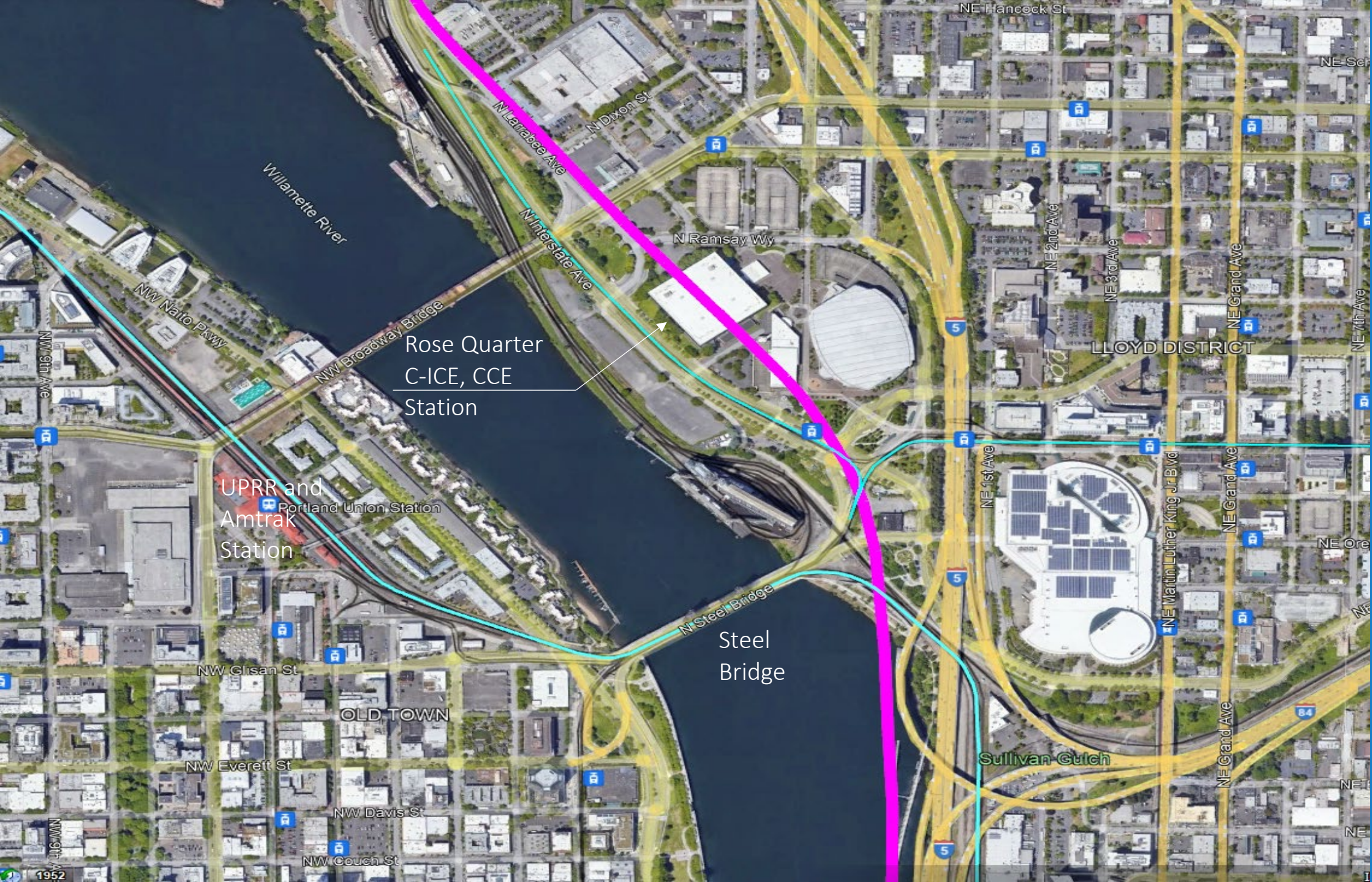


CHSR Corridor and the New I-5 Corridor between the Willamette River's North Bank and SW Wilsonville Rd

This is the area for the narrowing of the combined corridor for the multi-modal bridge river crossing.



CHSR Corridor between Tualatin and the Portland Rose Quarter Transportation Hub



CHSR Corridor
at the Portland
Rose Quarter
Transportation
Hub

Rose Quarter
C-ICE, CCE
Station

UPRR and
Amtrak
Station

Steel
Bridge

Eugene CHSR Station to Portland CHSR Station Mileage and Times

Number one = Priority, number two = Secondary Stops

Station to Station	CHSR Milage	Estimated Travel Times
Eugene-Albany # 1	41.32 miles	19 minutes
Albany-Salem # 1	21.19 miles	11 minutes
Salem-Keizer # 1	3.99 miles	4 minutes
Keizer-Woodburn # 2	13.94 miles	9 minutes
Woodburn-Wilsonville # 2	10.06 miles	7 minutes
Wilsonville-Bridgeport # 2	8.35 miles	6 minutes
Bridgeport-PCC Sylvania # 2	3.08 miles	4 minutes
PCC Sylvania-Barbur # 2	1.33 miles	3 minutes
Barbur-OMSI # 1	4.92 miles	5 minutes
OMSI-Portland Rose Quarter # 1	1.73 miles	3 minutes
109.91 miles	Eugene, Albany, Salem, Portland	45 minutes (3 stops)

Transportation Mode Comparison	Stop to Stop	Estimated Travel Times
112.20 miles (Bus, Autos)	Eugene-Portland	2 hours and 45 minutes
123 miles (Amtrak)	Eugene-Portland	3 hours and 20 minutes
110 miles (CHSR)	Eugene-Portland	35 minutes (direct)

CHSR Miles between Eugene, OR, and Portland

On Ground	Cut/Fill	Flyover or Bridges	Tunnels or Underpass
2.84 Mi Eu_014 I-5	0.19 Mi Eu_015 I-5	0.58 Mi Eu_009 new	5.39 Mi Eu_028 new
2.75 Mi Eu_018 I-5	0.54 Mi Eu_017 I-5	1.39 Mi Eu_013 new *	0.81 Mi Eu_058 new
0.80 Mi Eu_019 I-5	1.14 Mi Eu_026 I-5	0.91 Mi Eu_016 I-5	1.33 Mi Eu_059 new
30.7 Mi Eu_021 I-5	0.56 Mi Eu_027 I-5	3.00 Mi Eu_021 I-5	2.51 Mi Eu_060 I-5 *
0.93 Mi Eu_023 I-5	0.24 Mi Eu_031e I-5	3.98 Mi Eu_022 I-5	
2.76 Mi Eu_025 I-5	0.86 Mi Eu_038e I-5	0.17 Mi Eu_024 I-5	
0.23 Mi Eu_040e I-5	0.25 Mi Eu_052 I-5	2.91 Mi Eu_029 new	
6.67 Mi Eu_043 I-5	0.28 Mi Eu_053 I-5	0.81 Mi Eu_030e I-5	
4.00 Mi Eu_045 I-5	0.27 Mi Eu_057 new	0.74 Mi Eu_034e I-5	
1.47 Mi Eu_047 I-5		0.31 Mi Eu_035e I-5	
3.58 Mi Eu_048 I-5		0.35 Mi Eu_036e I-5	
		0.18 Mi Eu_037e I-5	
		0.10 Mi Eu_039e I-5	
		0.60 Mi Eu_041e I-5	
		5.72 Mi Eu_042 I-5 *	
		3.13 Mi Eu_044 I-5	
		1.10 Mi Eu_046 I-5	
		3.17 Mi Eu_048 new	
		0.99 Mi Eu_049 I-5	
		0.10 Mi Eu_051 I-5	
		1.45 Mi Eu_055 I-5	
		2.00 Mi Eu_056 I-5	
		4.13 Mi Eu_061 new	
56.73 Miles 52.09 %	4.33 Miles 3.97 %	37.82 Miles 34.72 %	10.04 Miles 9.21 %
			108.92 Total Miles CHSR
			123 Miles Total Amtrak

New and existing Right of Way (RoW) declaration.

18.65 miles in a new corridor	90.27 miles in an existing right of way, UPRR, or Hwy
17.12 % of this CHSR RoW must be acquired	82.89 % may be shared
Tunnel miles may be excluded from RoW purchase.	

* = Some deviations, as some miles are aside from the named corridor segment.