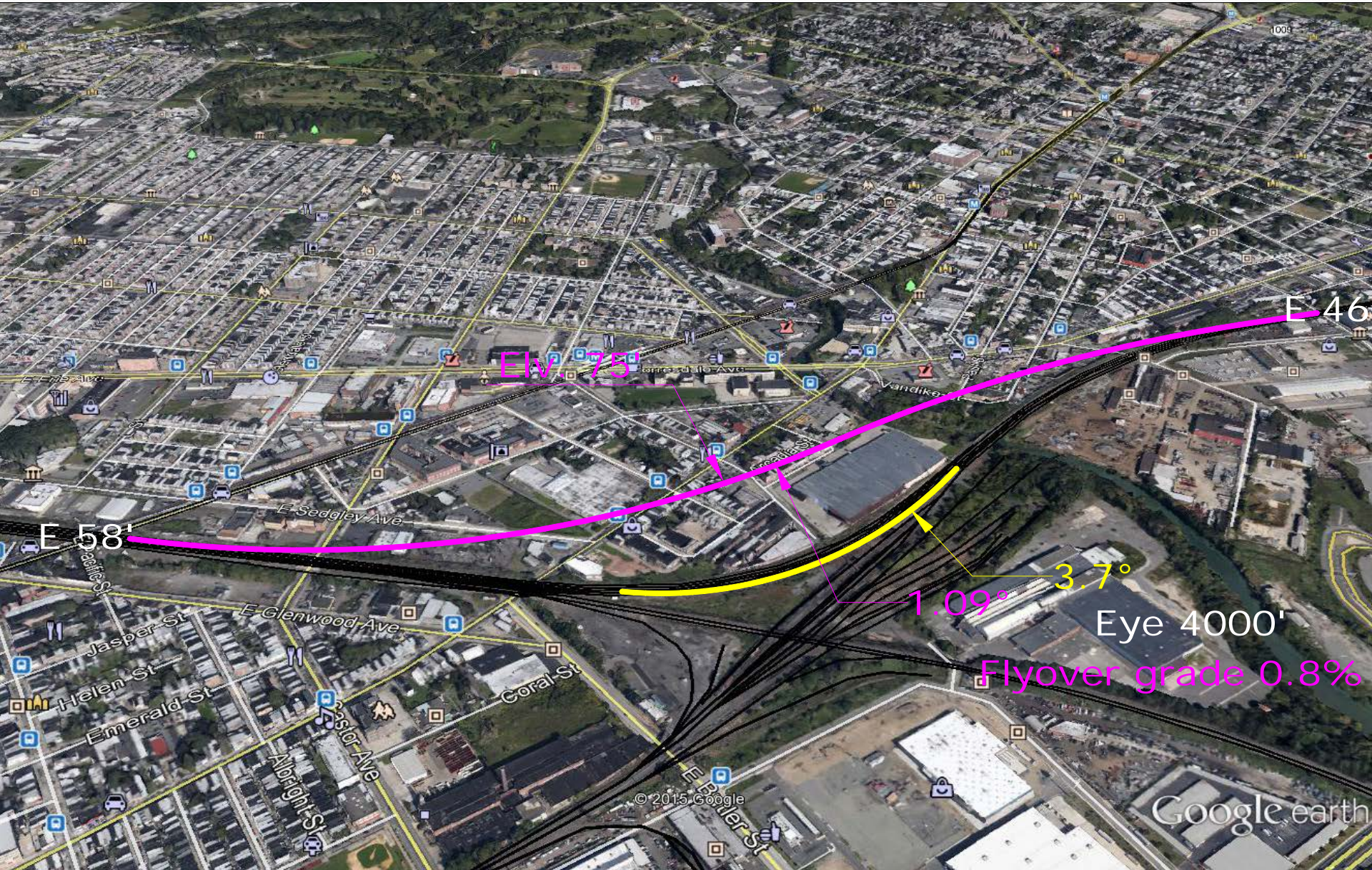


# Frankford Curve in Philadelphia

- ❖ Redesign the old Frankford curve with a flyover and a much larger radius (lesser degrees) from  $3.7^\circ$  to  $1.09^\circ$   
Or from 55Mph speed limit to 100Mph>
- ❖ This flyover design will increase speeds, reduce energy consumption and provide safety for the trains.
- ❖ Lesser problems with “rock throwing” this design can effectively be fenced off.
- ❖ Some of the existing rail network will no longer be needed.
- ❖ We can flyover many of the buildings below due to a dip in the topography.

# Frankford Curve (HSR Philadelphia)



E 46th St

E 75th St

E 58th St

Eye 4000'

Flyover grade 0.8%

1.09°

3.7°

© 2015 Google

Google earth